




## *Medallion Series*

*Pavement Maintenance and Marking Products*



**PRESERVED**

## **Preserve Your Pavement Investment**

The Medallion line of professional grade materials designed to repair and extend the life of your pavement.

Certified "Black Series" products are innovative, high performance materials that provide a substantially greater preservation of your pavement investment.



The logo features the word "Zoom" in a large, bold, italicized font with a yellow-to-black gradient. Below it, the word "FLEX" is written in a smaller, bold, italicized font. At the very bottom, in a small font, it says "HIGH PERFORMANCE REPAIR PRODUCTS".

The logo features the word "PROSTRIP" in a bold, black, sans-serif font. Below it, the word "MX" is written in a larger, bold, black, sans-serif font. At the very bottom, in a small font, it says "HIGH PERFORMANCE TRAFFIC PAINT".

# PRESERVE YOUR PAVEMENT INVESTMENT

Add flexibility and durability to your pavement sealer

Safer and longer lasting pavement markings



Your pavement investment is preserved through the increase of durability and flexibility that ZoomFlex's® exclusive formulation and features provide. With this high performance sealer additive, your sealer will bond, look, and shield better and for a longer period of time. Further, ZoomFlex's® rapid dry properties reduce costly operational interruptions due to parking closures.



A well marked parking lot provides safety for pedestrians and motorists alike. With ProStripe MX's® exclusive formulation and features, your pavement markings have a longer effective service life, which increases safety, reduces re-stripe costs and business interruptions.



## Features

## Benefit

Dry Accelerator	✓	Resistance to damage by wash out and inadvertent traffic. Safely open to traffic sooner. Less business interruption
Wear Properties	✓	Sealer looks and shields pavement surface better and longer
Petroleum Resistance	✓	Reduced damage caused by oil and other petroleum's penetration
Aggregate Retention	✓	Long lasting skid, slip and wear resistance. Assists in maintaining a safe walking surfaces
Flexibility & Cohesion	✓	Reduces surface cracking of sealant and bonds better to smooth surfaces.
Color Control & Retention	✓	Dry's to deep black and provides for UV protection
<b>Environmentally Friendly</b>	✓	Waterborne Polymer with low VOC's. Better for the atmosphere and greener manufacturing, application and disposal

## Features

## Benefit

Meets Federal Specifications TTP - 1952 - E Type I, II	✓	Authorized use on markings of high volume Federal roadways and airports.
Dry Accelerator	✓	Resistance to damage by wash out and inadvertent traffic. Safely open to traffic sooner. Less business interruption
Hybrid-Resin Formulation	✓	Enhances Asphalt and Concrete adhesion. Better glass bead retention. Longer service life.
Hardened Silica Blend	✓	Resists tracking of dirt, dust and debris. Adds protection from wear, scuffing, petroleum's and UV damage
Flexibility & Cohesion	✓	Reduces surface cracking of sealant and bonds better to smooth surfaces.
Color Control & Retention	✓	Brighter initial and retained color with special UV inhibitor. Safer more visible markings.
<b>Environmentally Friendly</b>	✓	Lead free, Waterborne Polymer with low VOC's. Greener manufacturing, application and disposal

Formulated with a new Innovative Polymer Emulsion

100% Acrylic Waterborne Traffic Paint Fortified with innovative Hardened Silica



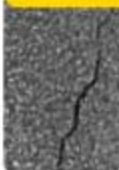
## Medallion Gold Series Products

### Sealer Additive



- Decreases dry time
- Reduces tracking and power steering marks
- Creates uniform black color
- Increases resistance to oils, fuels, grease and water
- Increases viscosity and suspends aggregates
- Outstanding toughness and adhesion

### Pourable Crackfill



- Rubberized asphalt emulsion with greater flexibility formulated for filling narrow pavement cracks up to 1/2-inch in width
- Excellent flow properties and no pinholing
- Resilient characteristics that allow for cohesion, adhesion, and flexibility
- Ready to use on any asphalt surface

### Oil Spot / Prime



- Quick drying formula
- Coats and promotes adhesion over oil, grease, gasoline or chemical stains prior to application of sealer
- Can be used over all types of hot patched areas or oil contaminated cracks
- Easy to use on any asphalt surface

### Alligator Crackfill



- Requires less labor and equipment than other repair methods
- Contains a unique blend of asphaltic emulsion, mineral fillers, glass fiber, ground rubber and plasticizer
- Formulated specifically for alligator asphalt
- Ready to use on any asphalt surface

### ProStripe Plus



- Waterborne Traffic Paint
- Exceeds TTP-1952-B, D & E Federal Spec
- INCREASED: dry rate, solids, pigments & coverage
- REDUCED: fading, bleed-through & pavement cracking
- Lead free, low VOC's & non-hazardous
- Formulated specifically for airless striper application
- Easy cleanup with just soap and water